

What is osteoarthritis?

Osteoarthritis is a degenerative joint disease, which means it is a progressively worsening disease. The increasing worsening inflammation of the joints is caused by the deterioration of the cartilage. Cartilage is the smooth, white tissue that covers the ends of bones where they come together to form joints. Healthy cartilage in our joints makes it easier to move and acts as a shock absorber.

It allows the bones to glide over each other with very little friction. When cartilage is damaged and wears away, bone starts to rub against bone, causing pain, inflammation and stiffness.

When cartilage breaks down whether it is due to age, repetitive stress of a joint, other chronic diseases such as hip dysplasia or elbow dysplasia, a cruciate ligament rupture leads to an unstable joint, which creates further damage. As the cartilage wears away, bone starts to rub on bone, causing pain, inflammation and stiffness as well as making using the limb difficult.



What is osteoarthritis?

Did you know that osteoarthritis in humans and animals is remarkably similar? The physical pain (which will vary from day to day) the stiffness and inability to move, and even the emotional effects are almost the same. Osteoarthritis affects not only the joints but also quality of life and causes emotional stress.

This similarity between our species is why Humanimal Trust focus on osteoarthritis as one of the diseases where we can make a big difference with One Medicine.

Humanimal Trust encourages collaboration between doctors and vets, so that medical breakthroughs benefit humans and animals equally. This is One Medicine.

What is Pain?

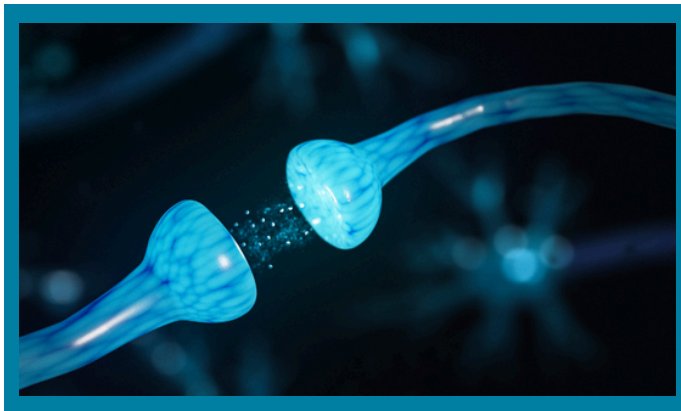
Pain comes in many forms, and chronic pain, such as osteoarthritis (OA), can be particularly challenging. If not addressed early, it becomes much harder to manage. Chronic pain isn't just prolonged discomfort—it can deeply affect your dog's physical and emotional well-being.

The good news is there are ways to relieve pain. Medications can be prescribed to provide relief, though it may take some time to find the right combination or dosage that works best for your dog. So, don't give up! Tweaks and adjustments are often necessary to ensure effective pain management.

Beyond medications, there are numerous small changes you can make at home that can have a big impact on your dog's quality of life. These environmental adjustments are simple to implement and can help create a more comfortable and supportive environment for your pet.

One Medicine: A Better Future for Both Humans and Animals. At Humanimal Trust, we believe in the power of One Medicine - a future where human and animal healthcare evolve together and benefit equally from medical progress—without sacrificing the lives of animals for research.

At Humanimal Trust, we believe in the power of One Medicine - a future where human and animal healthcare evolve together.



Synapsis firing the electrical signals are converted into chemicals that can easily cross the gap and pass on to the next neuron where they again get converted into electrical signals

Copyright: Koto_Feja from Getty Images Signature